

URAYASU CITY GUIDE

Where Nostalgia
Meets Modernity
By The Sea

URAYASU CITY

Urayasu seamlessly blends its vibrant history with the comforts and advancements of modernity, offering a rich tapestry of experiences to be enjoyed and explored. Traditional businesses and sights share the stage with contemporary leisure spots, reflecting the city's evolution from a fishing village to a bustling urban hub. Here, the past and present coexist, inviting visitors to explore a landscape where heritage meets innovation, making Urayasu a captivating destination for those seeking the charm of history and the excitement of the contemporary.

URAYASU'S DRAMATIC TRANSFORMATION

1 Pre-reclamation Era

Prior to the 1960s, Urayasu thrived as a fishing community. The town's access to the sea facilitated a bustling fishing industry, essential to the local economy. However, the surrounding waterways began to suffer due to industrial pollution, which gradually undermined the fishing industry.

2 Reclamation Period (1964-1981)

In 1964, Urayasu embarked on an extensive land reclamation project, prompted by the declining fishing industry and the need for economic revitalization. By 1971, the adverse impacts of pollution and the allure of industrial development led to the abandonment of Urayasu's fishing rights. This period concluded in 1981, marking a pivotal shift in the town's landscape and economic foundation.

3 Modern Era

The opening of Tokyo Disneyland® in 1983 heralded a new chapter for Urayasu. Within two decades, the town's area quadrupled, completing the transition from a fishing village into a travel destination with a major theme park. This shift not only altered the town's physical makeup but also redefined its industrial landscape.



HISTORICAL SIDE

Urayasu's Rich Historical and Cultural Tapestry

The city of Urayasu offers visitors opportunities to engage with both Japan's traditional culture and the local customs unique to Urayasu itself. The city is adorned with sites that reflect its historical significance, inviting visitors to delve deeper into the cultural heritage and actively experience it. From engaging in local festivals that showcase traditional dance and music to visiting historic sites that reveal the town's storied past, Urayasu is a place where the layers of history and culture are palpably felt, offering a deeper connection to the enduring legacy of the area.



- A** | **Dairenji Temple Bell:** The historic bell at Dairenji Temple, established in 1544, is rung daily at 11 a.m., preserving a tradition from the temple's fishing village origins.
- B** | **Yakatabune pleasure boat:** Set sail on a delightful boat ride departing from Urayasu, where you can immerse yourself in Japan's timeless traditions and rich cultural heritage.
- C** | **Urayasu City Folk Museum:** This museum faithfully recreates the nostalgic streets of old Urayasu as it flourished as a fishing village in 1952, showcasing its rich maritime history.
- D** | **Urayasu Festival Music Preservation Society:** Recognized as an intangible folk cultural asset, these musicians captivates guests with its exquisite musical performances and engaging humorous dances.
- E** | **Seiryu Shrine:** Founded in 1196, Seiryu Shrine begins its morning duties with cleaning the grounds. The shrine grounds are filled with the friendly smiles of the priests amidst the peaceful surroundings.
- F** | **Urayasu Three Shrine Festival:** This grand festival, held once every four years, features over 80 portable shrines. It's a bold and vibrant celebration filled with energy and spirit.
- G** | **Grilled Clams:** A renowned delicacy in Urayasu, these clams are carefully char-grilled one by one, a tradition that has been cherished for over 80 years, creating a deliciously addictive savory flavor.

CULINARY ADVENTURES IN URAYASU

Urayasu boasts dining establishments that satisfy food enthusiasts with dishes made from local ingredients and a welcoming atmosphere. These locations offer lively environments and a feeling for the city and it's people.



1 FOODIES DELI
This charming deli was inspired by the movie "Chef" and offers a twist on the Cuban sandwich. It serves fresh deli food and craft beer, with a friendly atmosphere ideal for kicking off a sightseeing adventure in Urayasu or Tokyo.
☎ 047-325-9110 🏠 1-4-28 Todajima Urayasu
🕒 11:00am-10:00pm 📅 Monday



2 Mon Ja
Delight in monjayaki, a customizable pan-fried dish! Despite its humble appearance, this flavorful favorite is not to be missed. Enjoy cooking it yourself at your table, or with staff assistance to aid in the experience.
☎ 047-723-8181 🏠 1-11-1 Kitazakae Urayasu
🕒 12:00 noon-3:00pm 5:00pm-11:00pm



3 MATSURI BREWING
Matsuri means festival in Japanese, and they brew nostalgic, easy on the palate craft beers. The shop's design is inspired by Miki-sho, where sacred sake is dedicated to spirits during festivals.
☎ 047-722-1441 🏠 2-1-27 Todajima Urayasu
🕒 3:00pm-11:00pm (opens at 12:00 noon weekends & national holidays) 📅 Tuesday

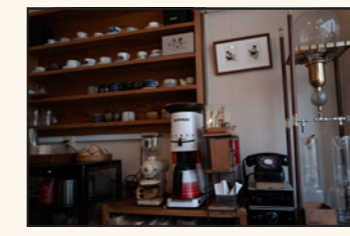
NOSTALGIC RETREATS IN URAYASU

Explore charming locations and immerse yourself in serene surroundings reminiscent of a bygone era, where you can relax and unwind, enjoying the timeless allure that these unique spots have to offer.

☎ Phone number 🏠 Address
🕒 Business hours 📅 Closed day



4 Usagi Tea Garden
Usagi Tea Garden, is located behind the historic Udagawa house. It offers coziness, Victoria sponge cake, and piping hot tea. Popular with the Lolita fashion crowd, it's also perfect for lovers of coquette and cottagecore.
☎ 047-702-5784 🏠 3-5-2 Horie Urayasu
🕒 12:00noon-6:00pm 📅 Monday Tuesday Wednesday



5 Nekozone Coffee
A charming cafe located in Nekozone featuring a cat motif. They are known for their cat paw shaped monaka, a traditional Japanese sweet and their original blend Nekozone coffee.
☎ 047-382-8584 🏠 4-16-16 Nekozone Urayasu
🕒 11:00am-6:00pm 📅 Sunday Monday & national holidays



6 Cat Lounge ME
Cat Lounge Me offers a relaxing environment where guests can enjoy the company of rescued cats. Offering a safe environment with the goal of finding their forever home and hosting events to raise proceeds towards their care.
☎ 070-1254-0877 🏠 2-28-2 Nekozone Urayasu
🕒 12:00noon-8:00pm

MODERN SIDE

Contemporary Lifestyle and Leisure

Urayasu features spacious parks with stunning sea views, open and inviting cycling paths, and well-maintained sports facilities, creating a dynamic leisure landscape. Moreover, international-class hotels enhance the city's appeal, offering world-class amenities and services. It's a city that invites exploration, making it a compelling destination for those seeking modern lifestyle and leisure experiences.



- H Seaside Cycling Road:** This cycling road running along the bay offers a refreshing way to explore the city. It's highly recommended for its open spacious cycling paths, ideal for a leisurely ride.
- I Sports Park Skatepark:** This skatepark recreates various environments for all skill levels, from challenging high-difficulty areas to beginner-friendly zones, making it a great spot for skaters of all abilities to enjoy.
- J Local Open-Air Cafe:** Always bustling with diverse and international clientele, this cafe offers an open and welcoming atmosphere, making it a popular gathering spot.
- K Palm Tree-Lined Resort Streets:** Streets in the area are lined with palm trees, creating a relaxing atmosphere that enhances the city's urban resort ambiance.
- L Throbbing Gate:** Located in a well-equipped sports park, this sculpture by world-renowned artist Taro Okamoto welcomes visitors, and symbolizes dynamic energy.
- M Maihama Seaside Sunset:** A stunning view that represents Urayasu, the sunset at Maihama Seaside is selected as one of Japan's top 100 photo spots.
- N Seaside Expansive Park:** From this vast park with sprawling fields, visitors can enjoy a sweeping view of Tokyo Bay, providing a serene escape.

URBAN LIFESTYLE AND ACTIVE LEISURE

Embracing an urban lifestyle and active leisure, Urayasu provides various facilities for city-centered, indoor and outdoor athletic activities. These facilities offer the joy of active play and exploring new hobbies.



7 believe
Believe is a specialty bike shop renowned for handling the globally beloved Brompton folding bikes. The shop also offers in-house coffee and sweets crafted by a French-trained pâtissier.
☎ 047-390-5577 🏠 4-21-13 Nekozane Urayasu
🕒 10:00am-7:00pm 🗓 Wednesday



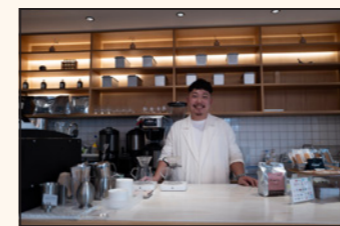
8 instant skateboards
Famous for its Shibuya branch in Miyashita Park, instant is an Urayasu original. A hub for skateboarding culture and fashion, offering unique local designs and Japanese brands.
☎ 047-381-0968 🏠 1-15-5 3f Kitazakae Urayasu
🕒 12:00noon-8:00pm



9 trAmpoland TOKYO BAYSIDE
TrampoLand is an indoor trampoline park catering to all ages and skill levels, perfect for hotel pre-check-in times or indoor fun on rainy days.
☎ 047-318-3701 🏠 5-7-7 Hinode Urayasu
🕒 12:00noon-9:00pm (10:00am-8:00pm on weekends & national holidays)

RELAXING AND INVITING INTERNATIONAL STYLE CAFES

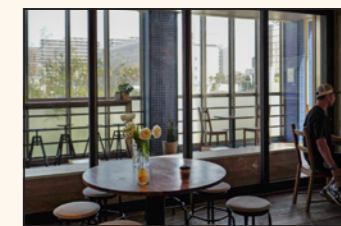
Western style cafes offer bright atmospheres and cozy inviting spaces. They are especially beloved by local expats and often have English speaking staff ready to welcome visitors to the city.



10 LITTLE BY LITTLE
Little by Little is a local bakery on Symbol Road in Shin-Urayasu. It's known for its bright, cozy atmosphere and popular fluffy melon bread, and is conveniently located close to several hotels.
☎ 047-329-2820 🏠 5-5-1 Hinode Urayasu
🕒 10:00am-5:00pm 🗓 Tuesday



11 LAUMELIA
Laumelia, a pet-friendly Hawaiian cafe near Sogo park in Shin-Urayasu, is well known for its fruit-topped pancakes and seasonal malasadas, featuring a cozy interior with a circular glass fireplace.
☎ 047-305-7700 🏠 5-7-5 Hinode Urayasu
🕒 10:00am-7:00pm 🗓 Wednesday



12 Bountiful Coffee
Bountiful Coffee, inspired by Australia's coffee culture, offers a friendly atmosphere with great coffee and snacks, conveniently located near Sogo park and several hotels.
🏠 6-1-10 Akemi Urayasu
🕒 8:00am-4:00pm

HOTELS & CONVENTION

Urayasu stands as a hub of hospitality with over 13,000 guest rooms available, catering to every preference from luxurious urban resort hotels to functional business accommodations. The city's hotel district boasts convention facilities exceeding 1,000 square meters, ideal for grand gatherings and events. This area offers a rich array of hotels, each adjacent to expansive banquet halls, making it perfect for both large-scale conventions and intimate meetings. Here, visitors can enjoy a blissful staycation experience, embracing both comfort and convenience, enhanced by Urayasu's blend of historical charm and modern sophistication.



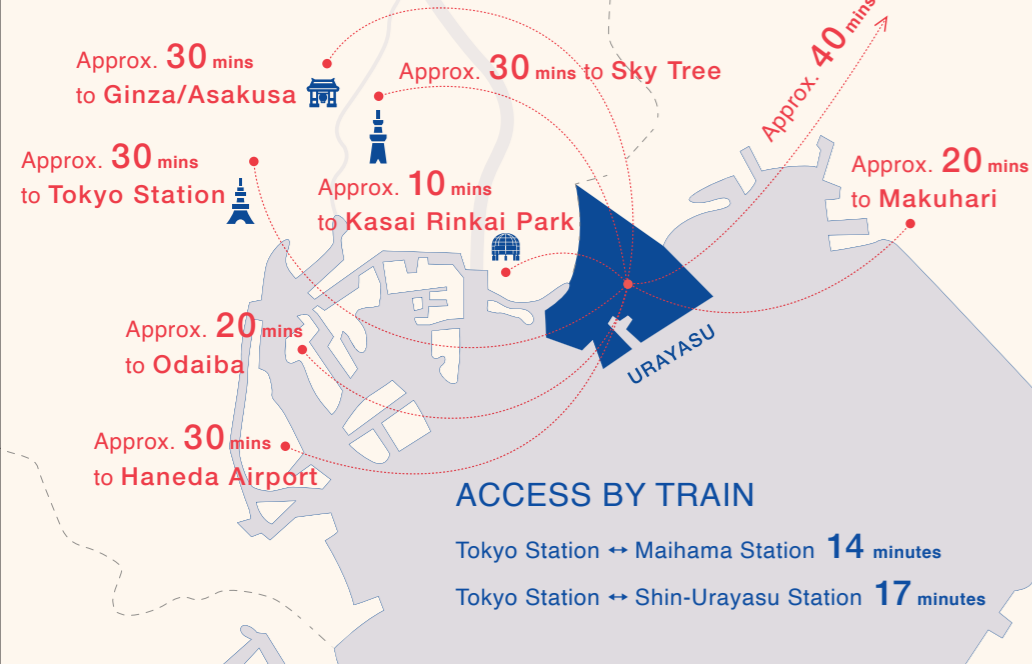
LIST OF HOTELS

Name	Address	Phone number
URAYASU STATION AREA		
13 Urayasu Beaufort Hotel	4-18-28 Nekozone	+81 47-355-8888
14 Urayasu Sun Hotel	1-19-13 Todajijima	+81 47-382-8811
15 Bay Hotel Urayasu-ekimae	1-15-28 Kitazakae	+81 47-702-8091
SHIN-URAYASU STATION AREA		
16 Hoshino Resorts 1955 Tokyo Bay	7-2-3 Hinode	+81 50-3134-8097
17 Urayasu Brighton Hotel Tokyo Bay	1-9 Mihama	+81 47-355-7777
18 Oriental Hotel Tokyo Bay	1-8-2 Mihama	+81 47-350-8111 (10:00-18:00)
19 Hotel EmionTokyo Bay	1-1-1 Hinode	+81 47-304-2727
20 Mitsui Garden Hotel PRANA Tokyo Bay	6-2-1 Akemi	+81 47-382-3331
21 Comfort Suites Tokyo Bay	5-8-15 Akemi	+81 47-380-9211
22 Tokyo Disney Celebration Hotel	7-1-1 Akemi	+81 47-381-1188
23 Pension-unbirthday	1-22-24 Takasu	+81 47-721-5151
24 Hyatt Regency tokyo Bay	5-8-23 Akemi	+81 47-305-1234
25 Flexstay Inn Shin-Urayasu	4-1-29 Imagawa	+81 47-381-8201
26 Mystays Shin Urayasu Conference Center	2-1-4 Akemi	+81 47-709-1600
27 ibis Styles tokyo bay	2-1-1 Hinode	+81 47-381-6775
28 La'gent Hotel Tokyo Bay	5-7-1 Hinode	+81 47-305-8015
MAIHAMA STATION AREA		
29 Tokyo Bay Maihama Hotel First Resort	1-6 Maihama	+81 47-355-1111
30 Tokyo Bay Maihama Hotel	1-34 Maihama	+81 47-355-1222
31 Grand Nikko Tokyo Bay Maihama	1-7 Maihama	+81 47-350-3533
32 HiltonTokyo Bay	1-8 Maihama	+81 47-355-5000
33 Hotel Okura Tokyo Bay	1-8 Maihama	+81 47-355-3333
34 Sheraton Grande Tokyo Bay Hotel	1-9 Maihama	+81 47-355-5555
35 Spa & Hotel Maihama Eurasia	13-20 Chidori	+81 47-351-4139
36 Hotel Eurasia Maihama Annex	10-5 Chidori	+81047-700-7000
37 Tokyo Disneyland Hotel	29-1 Maihama	+81 47-305-3333
38 Tokyo DisneySea Fantasy Springs Hotel	1-2 Maihama	+81 47-305-8888
39 Disney Ambassador Hotel	2-11 Maihama	+81 47-305-1111
40 Tokyo DisneySea Hotel MiraCosta	1-13 Maihama	+81 47-305-2222
41 Tokyo Disney Resort Toy Story Hotel	1-47 Maihama	+81 47-305-5555
42 Hotel Dream Gate Maihama	26-5 Maihama	+81 47-351-0180
43 Hotel Mystays Maihama	3-5-1 Tekkodori	+81 47-304-3939
44 Henn na Hotel Maihama Tokyo Bay	5-3-20 Fujimi	+81 50-5894-3737
45 Hiyori Hotel Maihama	2-25-8 Higashino	+81 47-390-7300
46 Four Stories Hotel Maihama Tokyo Bay	1-11-31 Fujimi	+81 47-314-5444

MAP & ACCESS

Urayasu offers excellent connectivity, making it an ideal base for exploring the heart of Tokyo and beyond. Conveniently located, it allows travelers to maximize their time sightseeing and shopping until the last possible moment before departing from the airport. The city's strategic location ensures that key attractions in Tokyo are just a short trip away, providing easy access to both the bustling city center and international travel hubs. Whether it's a quick jaunt to a famous landmark or a leisurely day spent exploring local gems, Urayasu serves as the perfect starting point for adventures in and around the metropolitan area.

ACCESS BY CAR



ACCESS BY TRAIN

Tokyo Station ↔ Maihama Station 14 minutes
 Tokyo Station ↔ Shin-Urayasu Station 17 minutes

SIGHTSEEING BUS PARKINGS

We have 3 parking spaces for sightseeing buses in the city.



• Urayasu Marina sightseeing bus over night parking

Maximum number of parking spaces: 10 / Reservation: <https://www.urayasu-kankou.jp/parking>
 Parking time: 19:00-8:00 / Operator: Subaru Enterprise Co., Ltd.
 Tel: 047-355-2222 Fax: 047-351-6999 / Business hours: 9:00-18:00 Closed: Wednesday
 Address: 1-2 Chidori Urayasu, Chiba 279-0032

• Urayasu City Sports Park No. 1 bus parking lot

Number of cars: 8 / Reservations: Advance reception at Tel: 0120-03-6548
 Address: 2-27 Maihama Urayasu, Chiba 279-0031 / Parking time: 24hour

• Urayasu City Sports Park No. 2 bus parking lot

Number of cars: 5 / Reservations: Advance reception at Tel: 0120-03-6548
 Address: 2-27 Maihama Urayasu, Chiba 279-0031 / Parking time: 24hour



Tourist Information IL MARE

Tourist Information IL MARE is a tourist information center operated by the Urayasu Tourism Convention Association located at Shin-Urayasu station. We provide information on accommodation, tourist facilities, and local restaurants so that you can stay in Urayasu more comfortably. Please feel free to drop in during our operating hours.

Operating hours: From 9:30 a.m. to 5:00 p.m.
 Address: 1-2-1 Irifune Urayasu, Chiba (Shin-Urayasu IL MARE 1st floor).



- 30 Tokyo Bay Maihama Hotel
- 31 Grand Nikko Tokyo Bay Maihama
- 32 Hilton Tokyo Bay
- 41 Tokyo Disney Resort Toy Story Hotel





Publisher: Urayasu Tourism Convention Association

1-1-1-10F Nekozone, Urayasu, Chiba, 279-8501 JAPAN
Tel: +81-47-350-7555 <https://www.urayasu-kankou.jp> Email: info@urayasu-kankou.jp